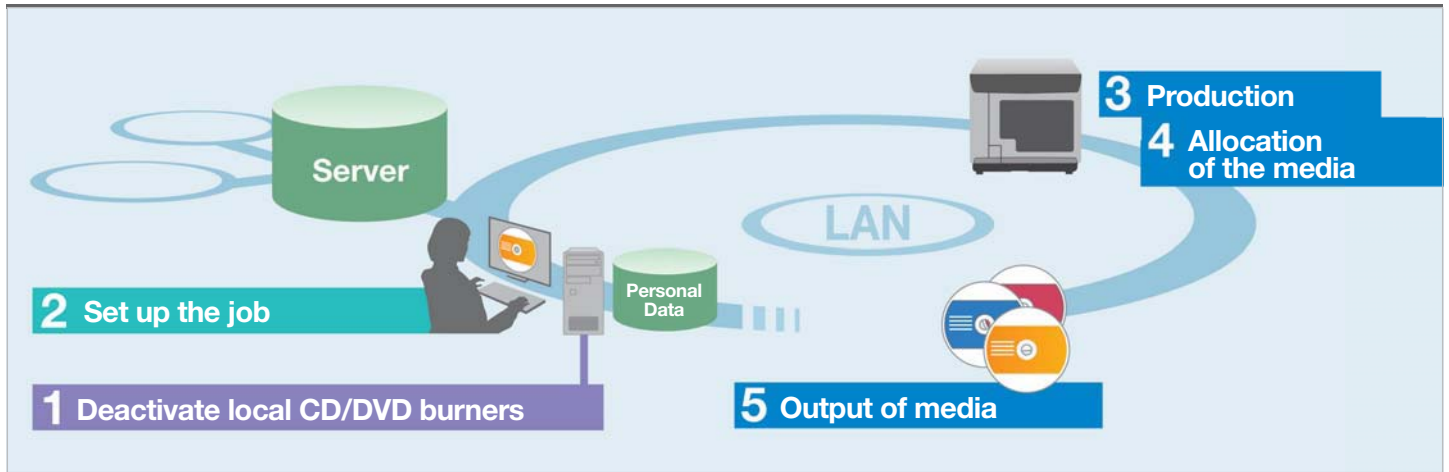


## Here's how you can produce series of CDs/DVDs with the Epson Discproducer PP-100N



### 1: Deactivate local CD/DVD burners

Since your data can be sent via your network to the Epson Discproducer PP-100N, you can deactivate the CD/DVD burners on local workstations. That gives you, as the administrator, full control over the burning of data onto optical media.

### 2: Set up the job

Users run the “Total Disc Maker” software to create a layout, and launch their burn and print job.

### 3: Production

Your blank CD/DVD discs will then be burned and printed individually to the desired number of copies and in accordance with the custom

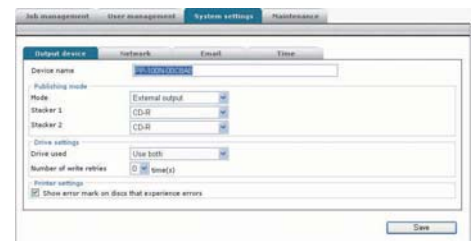
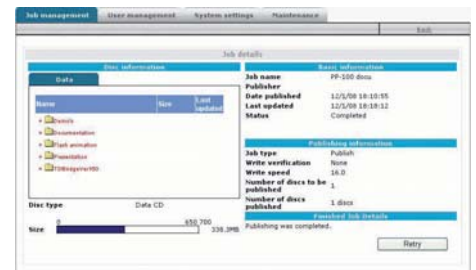
parameters that you specified. Using Epson recommended media you will get a high-gloss printout that is both smudge-proof and water-resistant.

### 4: Allocation of the media

On completion of the burn and print job, the finished CDs and DVDs are deposited in the output compartment.

### 5: Output of the media

A status report informs the user as soon as the burn and print job has been completed. Users can remove their CDs and DVDs by either opening the safety door or by using the output drawer.



The intuitive “Total Disc Network Administrator” software lets you manage users and their jobs.

## TECHNICAL SPECIFICATIONS

<b>LCD:</b>	Number of characters: 16 characters × 2 lines. Contrast adjustment in 8 levels Language: English, Japanese, French, German, Spanish, Italian, Dutch, Portuguese
<b>LEDs:</b>	POWER (Green), BUSY (Green), ERROR (Orange)
<b>Buttons:</b>	MENU, EJECT, CANCEL, Enter, Arrow keys (Up, Down, Right, Left)
<b>Security Lock:</b>	can be opened electrically (LCD Menu) or by using a physical key
<b>Ethernet IF:</b>	10Base-T/100Base-TX/1000Base-T, Connector: RJ45 Link LED: Green: 1000 bps, Orange: 100M bps, Yellow: activity, Off: No data
<b>Internal Logic:</b>	PP-100N includes: Control board, Harddisk and the web application “Total Disc Network Administrator”
<b>Supported OS:</b>	<ul style="list-style-type: none"> <li>Windows Vista SP1, Ultimate, Home Premium, Home Basic, Business, Enterprise</li> <li>Windows XP SP2 or later Home, Professional Edition</li> <li>Windows 2000 SP4 or later Professional Edition</li> </ul>
<b>Size/Weight:</b>	Width 377 mm, Depth 514 mm, Height 348 mm, Weight approx. 25 kg